

London Biggin Hill Airport



**DEVELOPMENT OPPORTUNITY
HANGAR/MAINTENANCE/FBO FACILITY
18,605 SQ M (1.86 HECTARES.)**

**WITH FULL PLANNING PERMISSION
LOCATED AT LONDON BIGGIN HILL AIRPORT**



LONDON BIGGIN HILL AIRPORT

Biggin Hill Airport Ltd, Biggin Hill, Bromley, TN16 3BH

Tel: +44 (0)1959 578500 Fax: +44 (0)1959 540406

Email: estates@bigginhillairport.com Website: www.bigginhillairport.com

The statements contained in these details are believed to be correct. Their accuracy is not guaranteed and do not form any part of an offer. None of such statements are to be relied upon as a representation of fact. Intending purchasers must satisfy themselves as to their correctness by inspection or otherwise.

DESCRIPTION

London Biggin Hill Airport is pleased to offer a large hangar/maintenance/FBO facility with planning permission for sale/lease with a long lease period. This is the most modern and largest facility available in London today. The airport is located just 12 miles from Canary Wharf (financial district) and 15 miles from Hyde Park Corner.

It has no runway slots and is a Port of Entry into the UK with the added advantage of being part of the pet travel scheme for the last five years (SkyPets). The airport has a thriving aviation community and expanding skills base that is growing rapidly. In recent time the airport has had new investment from Rizon Jet and also is about to embark on building a new airport hotel since planning has now been given.

The facility would suit those companies looking to expand their presence and capabilities in the London area or in the UK generally. The facility has capacity to house aircraft up to an A319 and can fit 10 to 12 Falcon 900's in at one time on maintenance. The facility also comes with planning for a large amount of office and workshop space, which is complemented with adequate car parking ramp and customer access.

ACCOMODATION (REFER TO APPROVED PLANS BELOW)

Summary of Gross External Development Areas

Administration Offices

Ground 444 sq.m.

Mezzanine 330 sq.m.

First 738 sq.m.

Second 738 sq.m.

TOTAL 2,250 sq.m. (24,219 SQ.FT)

Hangar Area

94 m width x 34 m depth 3,196 sq.m. (34,402 SQ.FT)

Apron Area

Extent of proposed apron 6,345 sq.m. (68,298 SQ.FT)

Car Parking facilities

Standard car parking bays 74

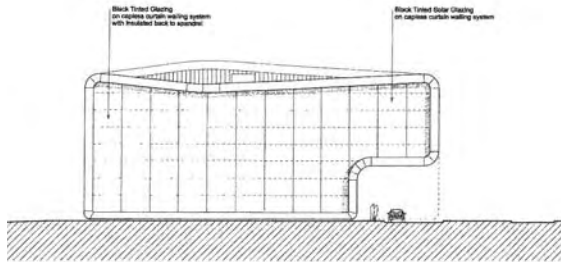
Disabled car parking bays 4

TOTAL CAR SPACES 78

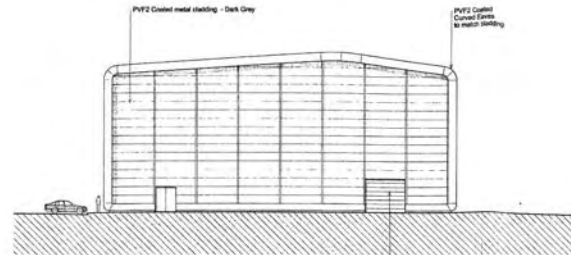
The airport is happy to talk to interested parties, and welcomes discussion and ideas as to how this excited opportunity may be realised.

For further information relating to the above development please contact the Estates Manager, Katy Woolcott who is based at the airport, contact details as shown overleaf.

APPROVED PLANNING DRAWING SHOWING SITE ELEVATIONS OF THE APPROVED FACILITY

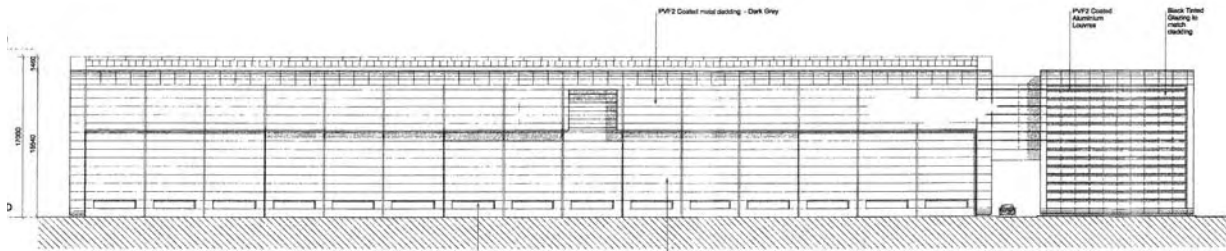


01 SOUTH WEST ELEVATION
SCALE 1:200



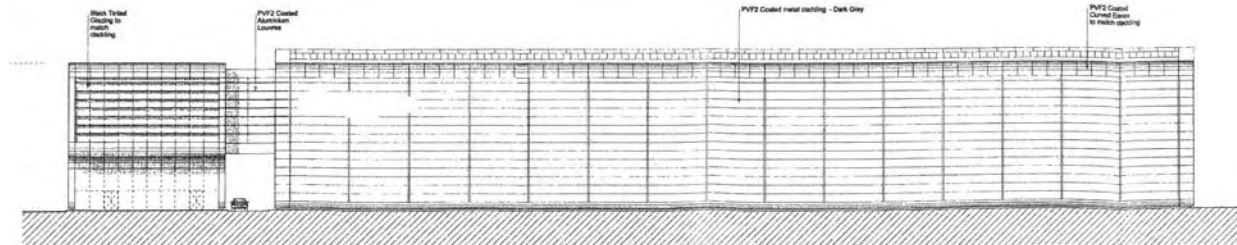
02 NORTH EAST ELEVATION
SCALE 1:200

Industrial Roller Door -
Colour to match Hanger



03 NORTH WEST ELEVATION
SCALE 1:200

Access & Load Lifting Hanger Doors -
Cladding to match Hanger



04 SOUTH EAST ELEVATION
SCALE 1:200

NOTES ORIGINAL: A1
DO NOT SCALE FROM THIS DRAWING.
ALL DIMENSIONS TO BE CHECKED ON SITE.
COPYRIGHT RESERVED.



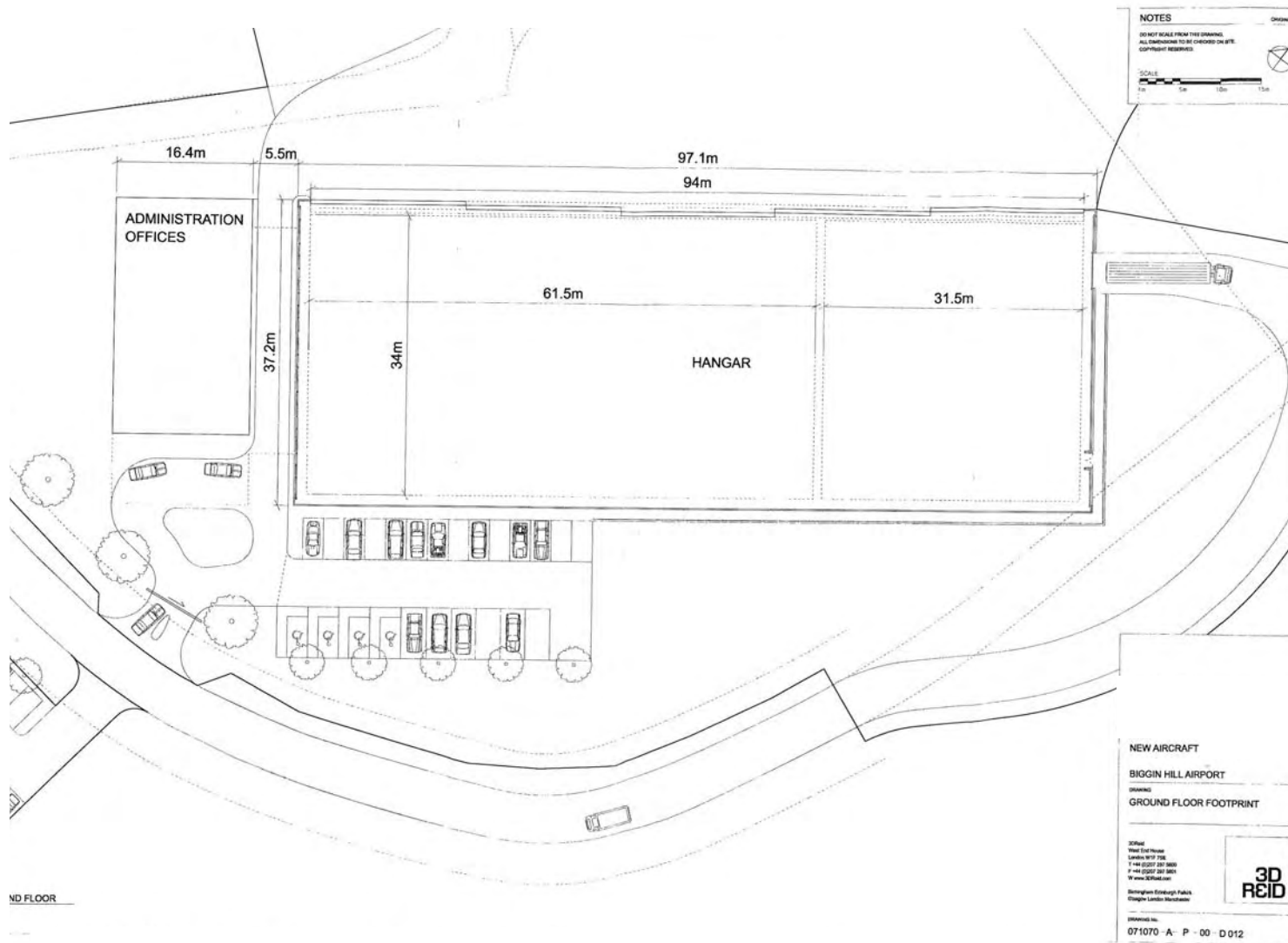
PROJECT
NEW AIRCRAFT
BIGGIN HILL AIRPORT
DRAWING
ELEVATIONS

3D REID

071070 - A - E - VA - D 013 -

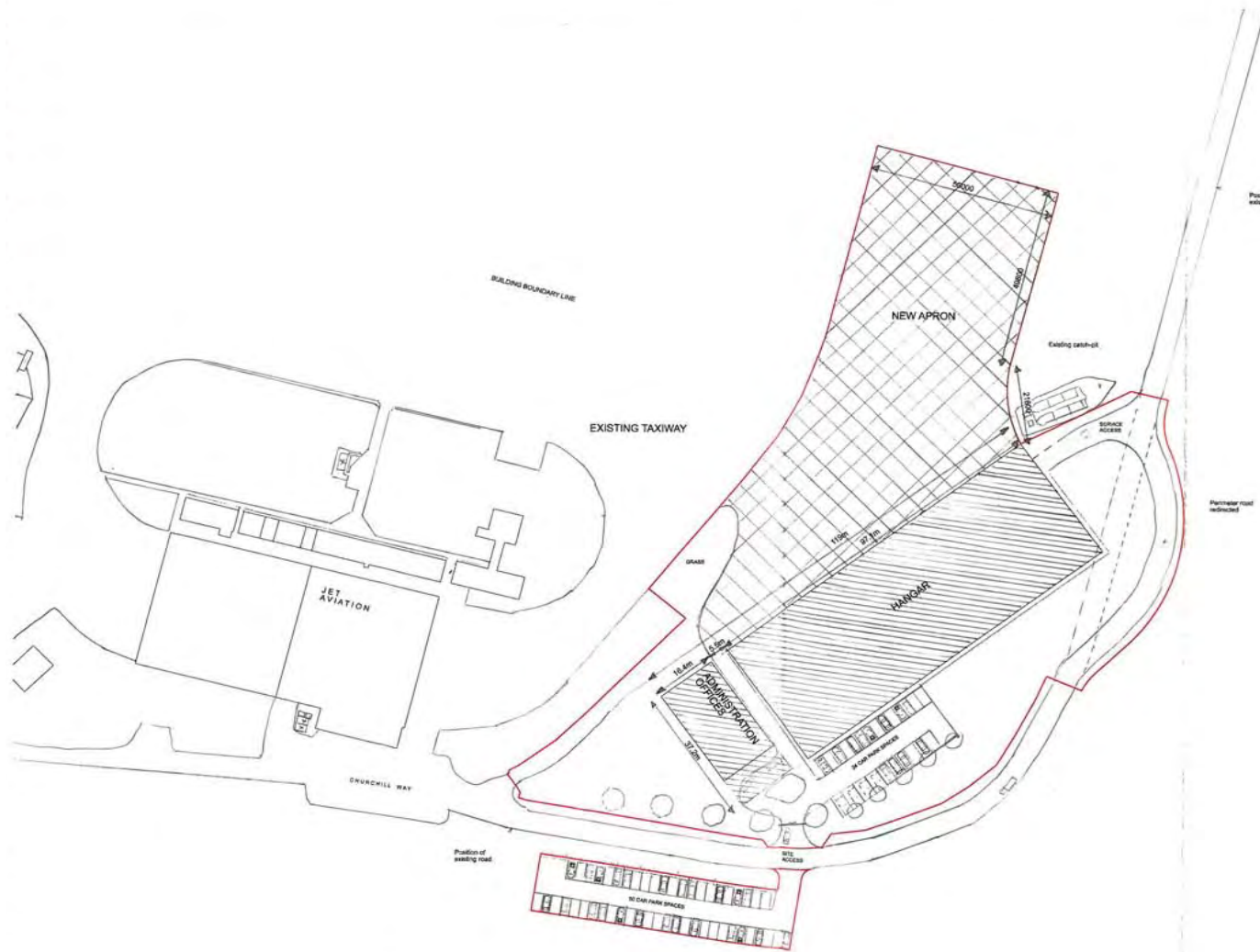
Our refkw2789

APPROVED PLANNING DRAWING SHOWING GROUND FLOOR FOOTPRINT OF THE APPROVED FACILITY



Our refkw2790

APPROVED PLANNING DRAWING SHOWING SITE LAYOUT OF THE APPROVED FACILITY



NOTES ORIGINAL A1

DO NOT SCALE FROM THIS DRAWING
ALL DIMENSIONS TO BE CHECKED ON SITE
CONTRACT REVISIONS:

SCALE
1:500
0m 5m 10m 20m 50m

CAR PARKING:
TOTAL SPACES 74
DISABLED SPACES (included) 4

SITE BOUNDARY
TOTAL SITE AREA = 18,865m² (1.86ha)

GROSS BUILDING FOOTPRINT AREA:
Administration Offices = 810m²
Hangar Area = 3,812m²
Total Footprint Area = 4,222m² (0.42 ha)

GROSS EXTERNAL DEVELOPMENT AREA:
Administration Offices: = 444m²
Ground = 330m²
First = 738m²
Second = 738m²
Total = 2,250m²
Hangar Area: = 3,812m²
Total Area = 5,862m² (0.58 ha)

EXTENT OF NEW APRON
TOTAL AREA = 6,345m² (0.63ha)

PROJECT
NEW AIRCRAFT HANGAR
BIGGIN HILL AIRPORT
DRAWING
SITE PLAN + FOOTPRINT

SCALE:
Sheet Size: A3
London W/P 75E
1:400 (200' 0" 100')
1:400 (200' 0" 100')
1:400 (200' 0" 100')

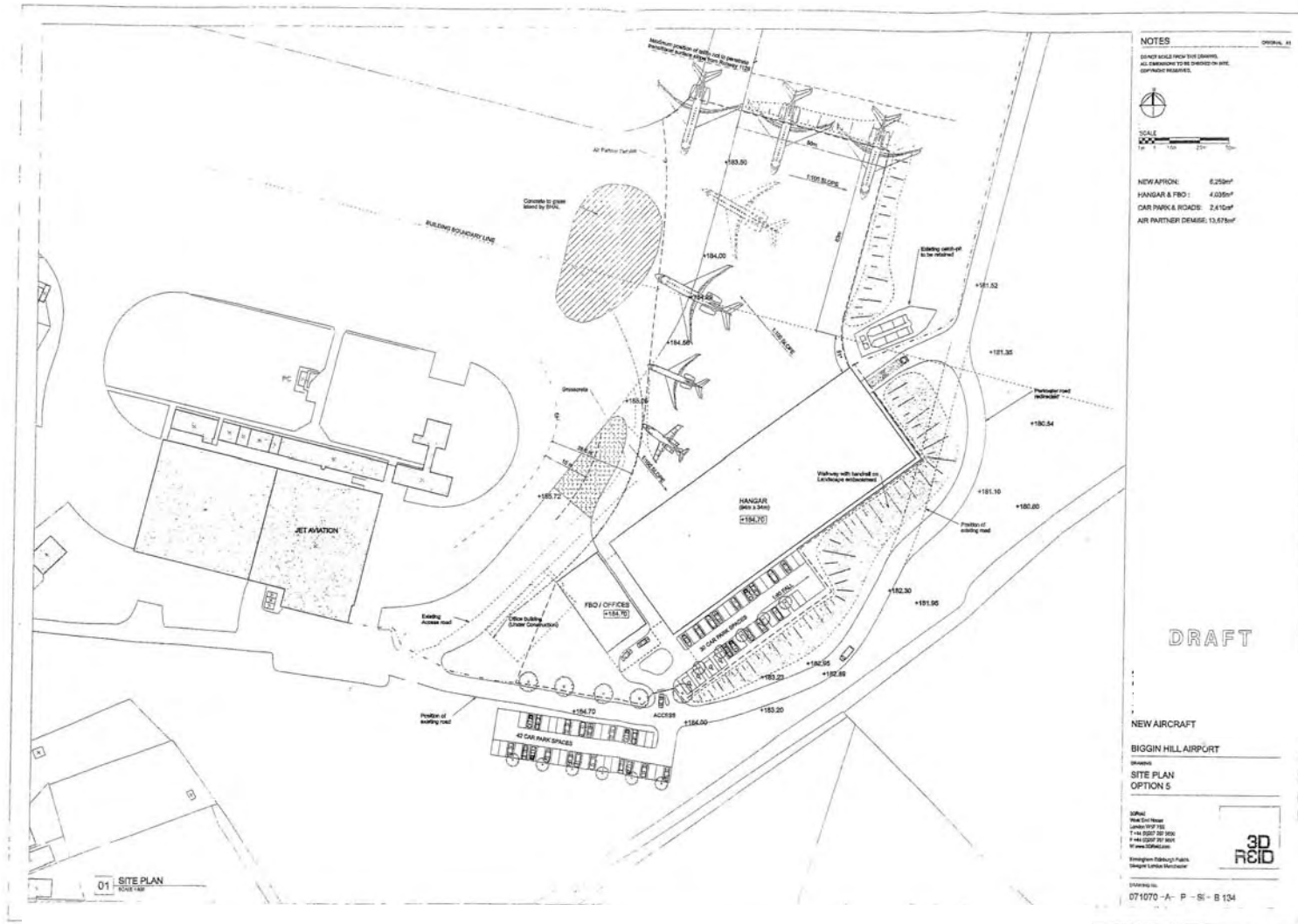
Birmingham Birmingham
Glasgow London Manchester

3D REID

DRAWING NO.
071070 A P SI D 011 A

Our refkw2788

APPROVED PLANNING DRAWING SHOWING SITE PLAN OF THE APPROVED FACILITY



Our refkw2791